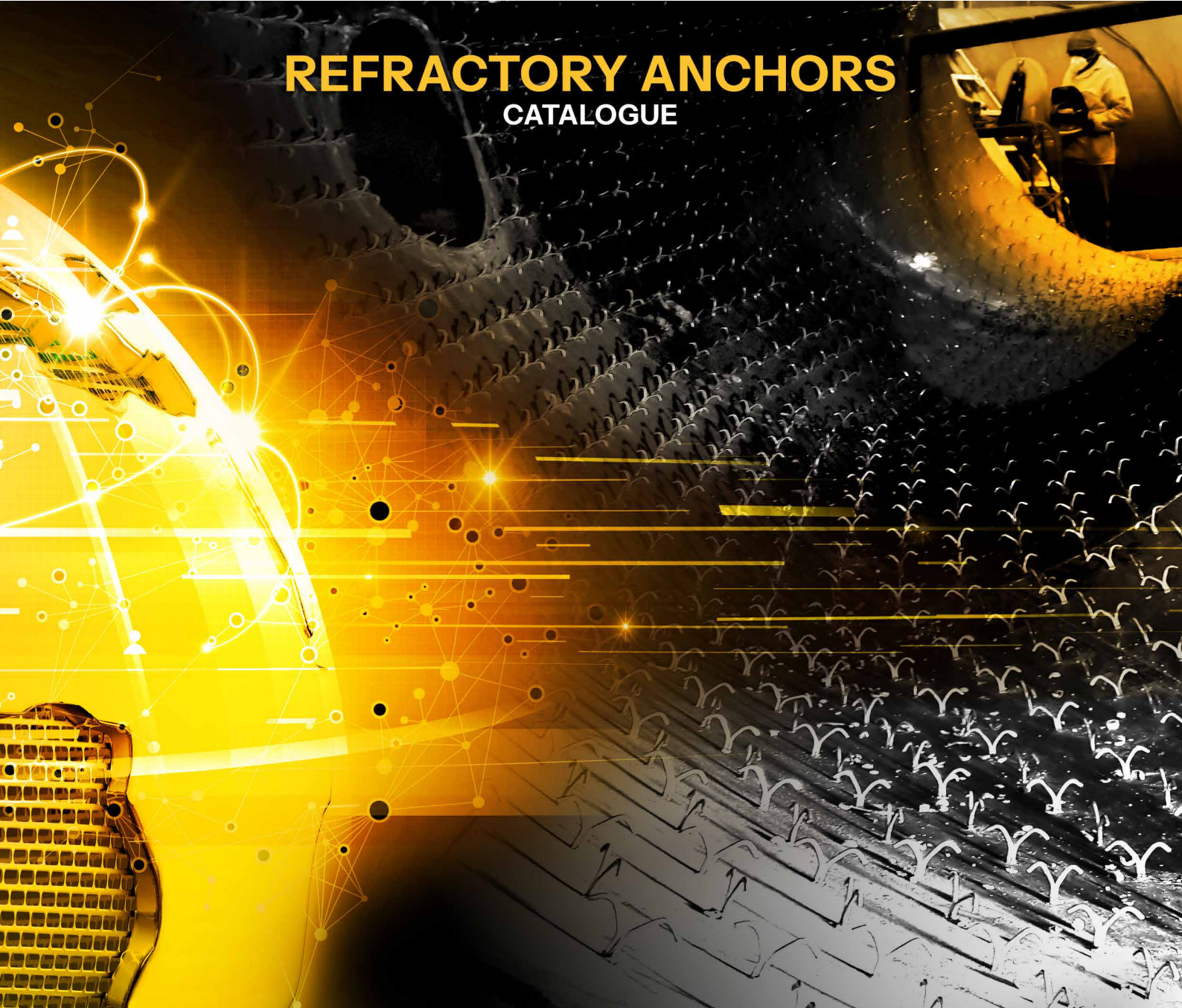


REFRACTORY ANCHORS CATALOGUE



LEADING THE WAY
IN ASSET INTEGRITY MANAGEMENT & INDUSTRIAL SOLUTIONS

www.dgc-africa.com



DGC HAS BEEN
**DESIGNING,
MANUFACTURING
& INSTALLING
STANDARD,
CUSTOM-MADE
HIGH-QUALITY
REFRACTORY
ANCHORS**
AS WELL AS A
WIDE RANGE OF
ANCHOR SUPPORTING
SYSTEMS
**FOR MORE
THAN 35 YEARS.**

CONTENTS

01	GULL WING
02	VEE WRIGGLE
03	VEE
04	FIBRE LOCK PIN
05	BOX V
06	BULL HORN
07	V.X.D.B
08	V.X.C-SCISSOR CLIP
09	ROOF ANCHOR
10	CEMENT PLANT SPECIAL
11	“C” CLIP
12	R6P - SUSPENSION
13	Y ANCHOR

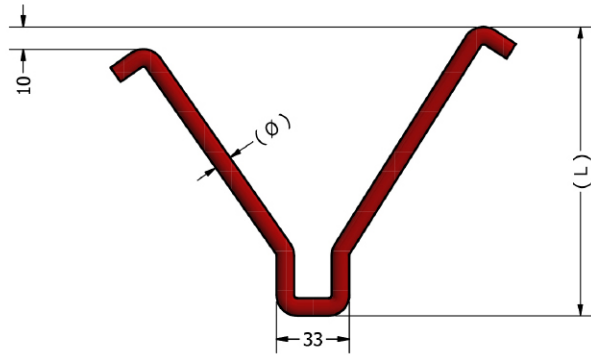
GULL WING

G.W.H.W

GULL WING HAND WELD

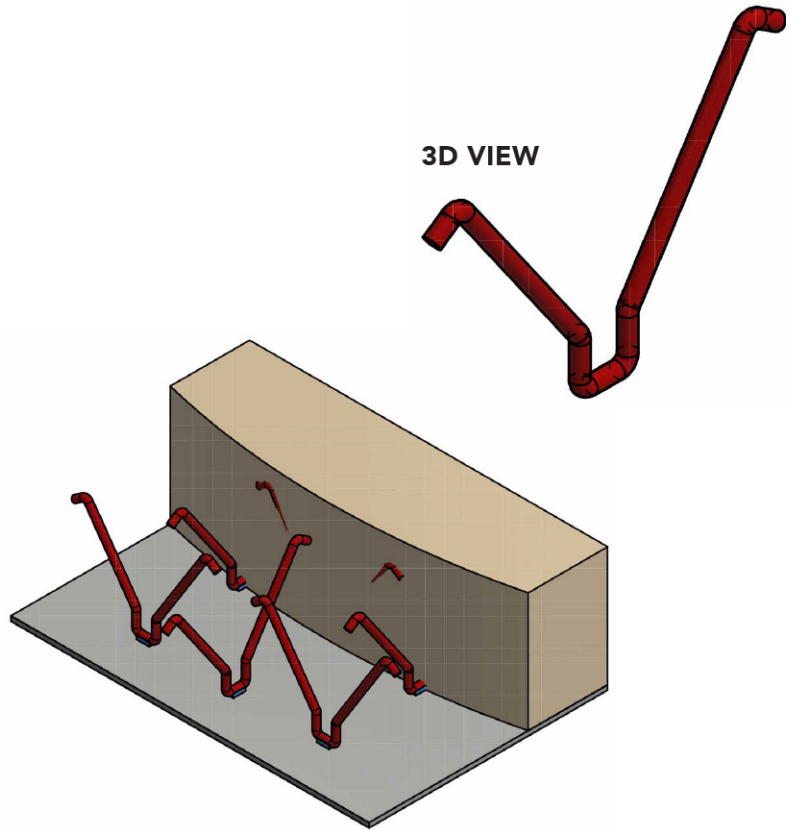
NOTES

Diameters Available: 5.5mm, 8mm, 10mm, 12mm



FRONT VIEW

3D VIEW



DESIGNATION

MANUFACTURED IN MILD STEEL

304 S/STL

316 S/STL

310 S/STL

253 MA

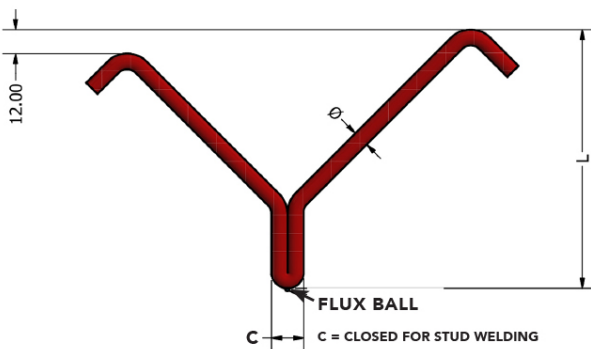
L = 25mm - 350mm

G.W.S.W

GULL WING STUD WELD

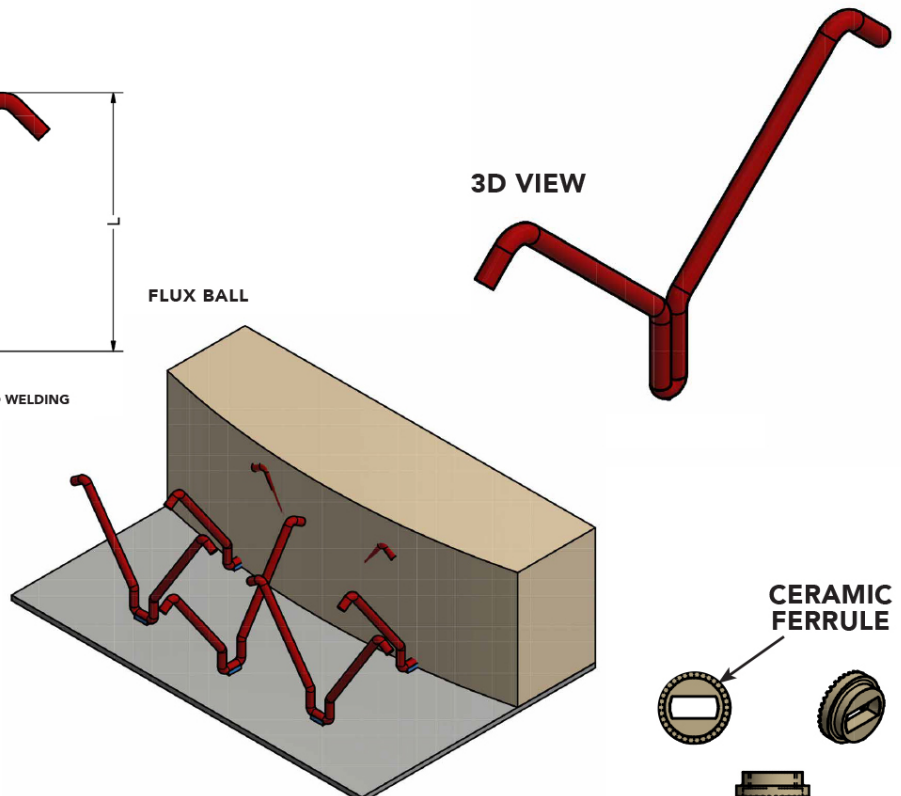
NOTES

Diameters Available: 5.5mm, 8mm



FRONT VIEW

3D VIEW



DESIGNATION

MANUFACTURED IN MILD STEEL

304 S/STL

316 S/STL

310 S/STL

253 MA

L = 25mm - 350mm

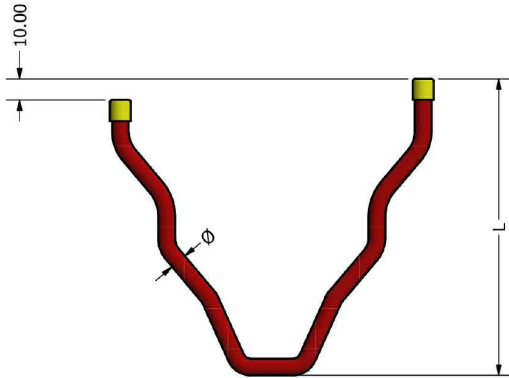
VEE WRIGGLE

V.X.H.W

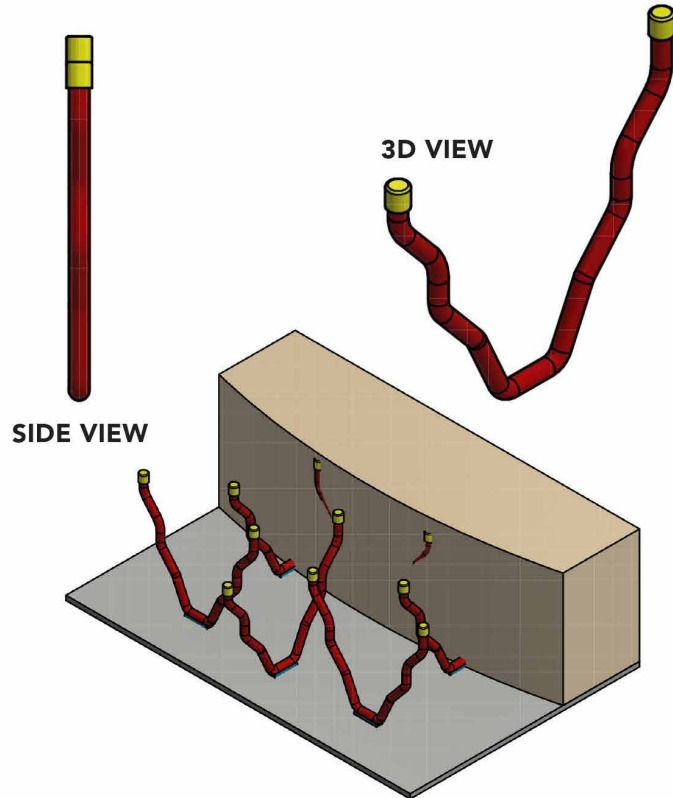
VEE WRIGGLE HAND WELD

NOTES

Diameters Available: 5.5mm, 8mm, 10mm, 12mm



FRONT VIEW



SIDE VIEW

3D VIEW

DESIGNATION

MANUFACTURED IN MILD STEEL

304 S/STL

316 S/STL

310 S/STL

253 MA

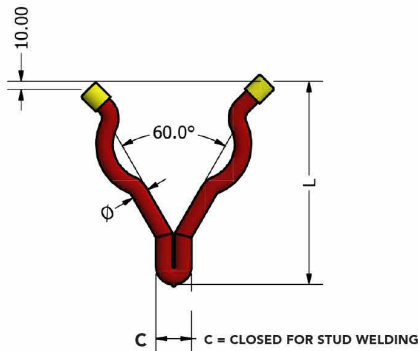
L = 25mm - 350mm

V.X.S.W

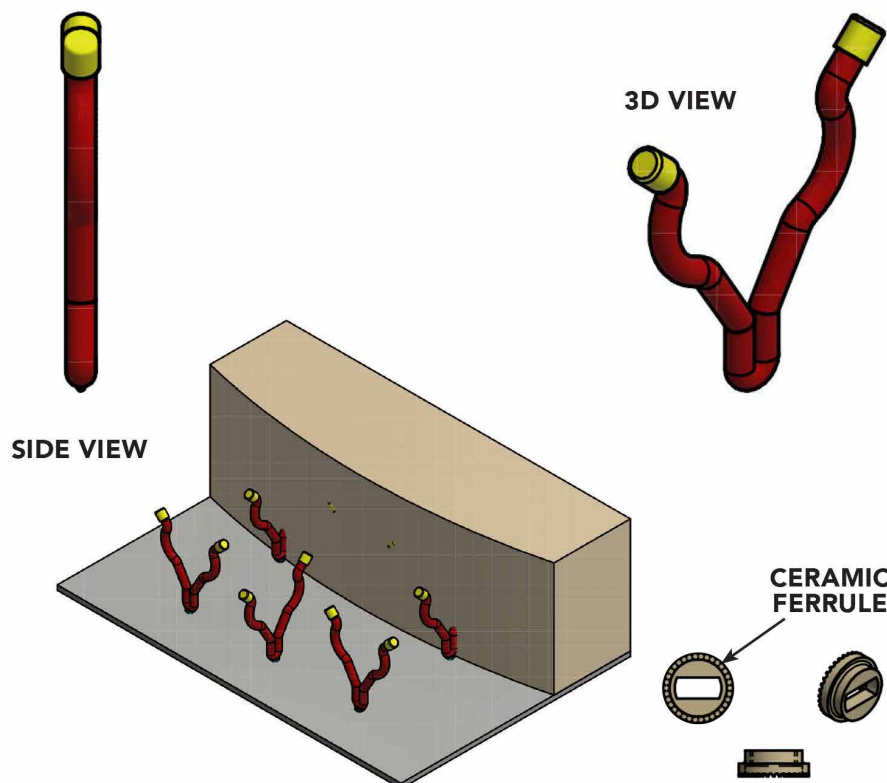
VEE WRIGGLE STUD WELD

NOTES

Diameters Available: 5.5mm, 8mm



FRONT VIEW



SIDE VIEW

3D VIEW

CERAMIC FERRULE

DESIGNATION

MANUFACTURED IN MILD STEEL

304 S/STL

316 S/STL

310 S/STL

253 MA

L = 25mm - 350mm

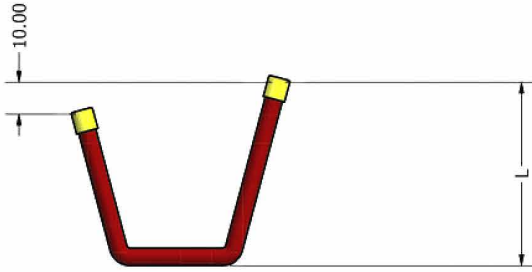
VEE

V.H.W

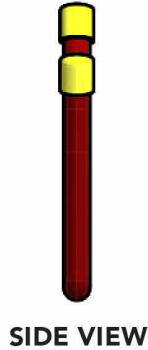
VEE HAND WELD

NOTES

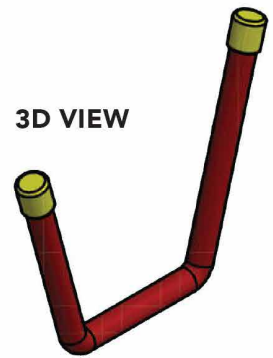
Diameters Available: 5.5mm, 8mm, 10mm, 12mm



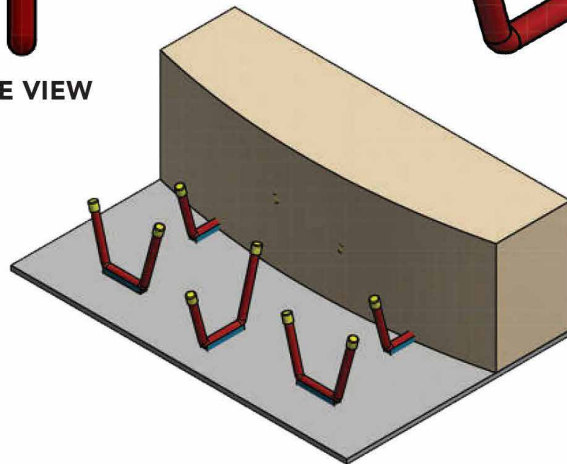
FRONT VIEW



SIDE VIEW



3D VIEW



DESIGNATION

MANUFACTURED IN MILD STEEL

304 S/STL

316 S/STL

310 S/STL

253 MA

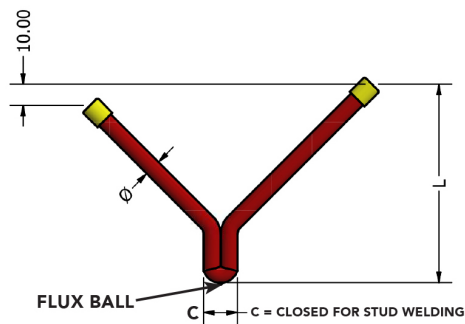
L = 25mm - 350mm

V.S.W

VEE STUD WELD

NOTES

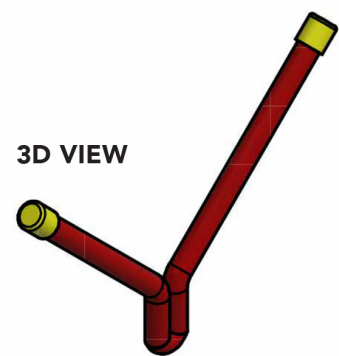
Diameters Available: 5.5mm, 8mm



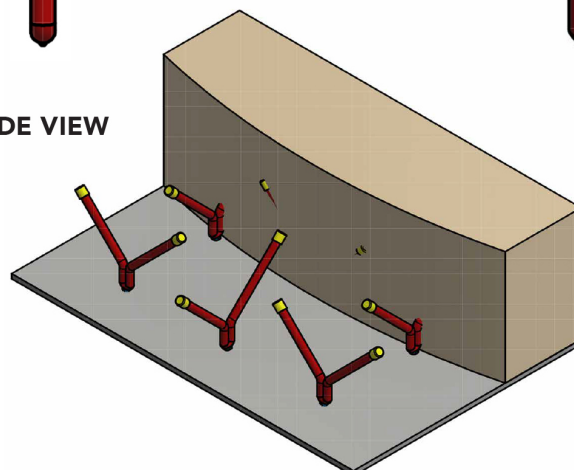
FRONT VIEW



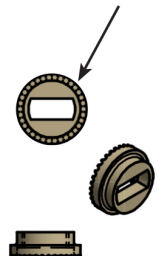
SIDE VIEW



3D VIEW



CERAMIC FERRULE



DESIGNATION

MANUFACTURED IN MILD STEEL

304 S/STL

316 S/STL

310 S/STL

253 MA

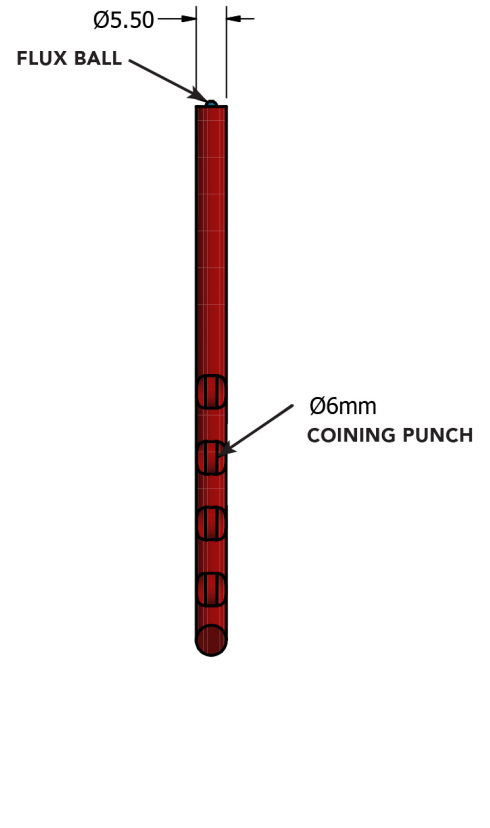
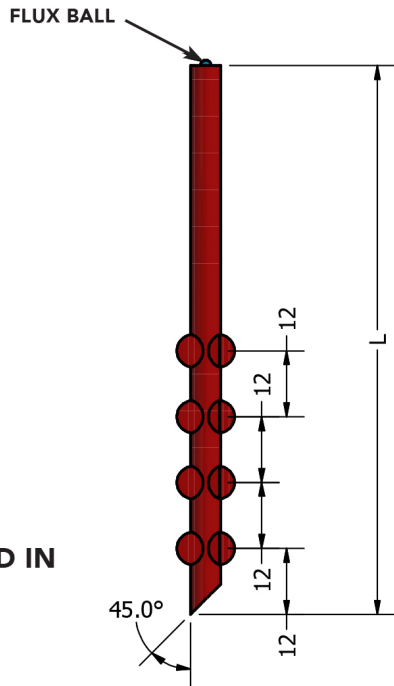
L = 25mm - 350mm

FIBRE LOCK PIN

FIBRE LOCK PIN

NOTES

Diameters Available: 5.5mm



DESIGNATION

MANUFACTURED IN

304 S/STL

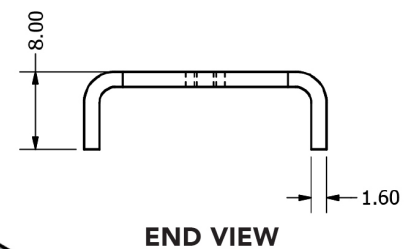
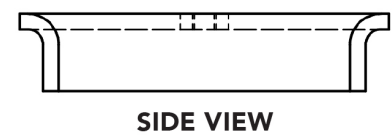
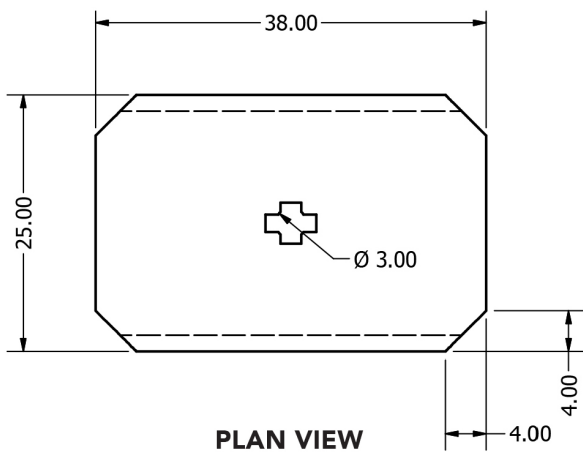
316 S/STL

310 S/STL

253 MA

L = 25mm - 350mm

LOCK WASHER FOR FIBRE LOCK PIN



DESIGNATION

MANUFACTURED IN MILD STEEL

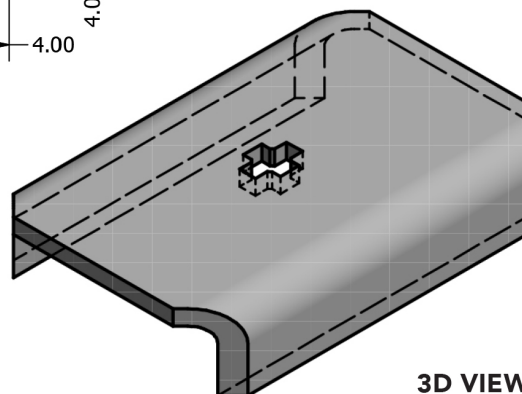
304 S/STL

316 S/STL

310 S/STL

253 MA

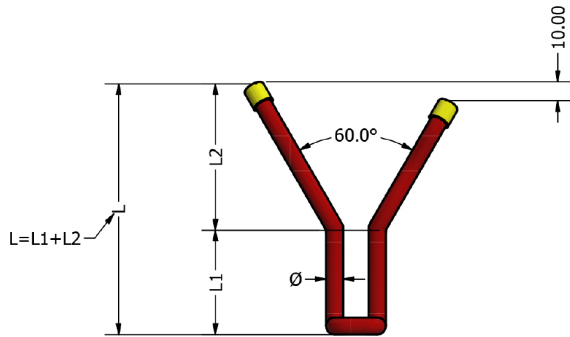
L = 25mm - 350mm



BOLT ON WRIGGLE VEE

NOTES

Diameters Available: 5.5mm, 8mm, 10mm, 12mm



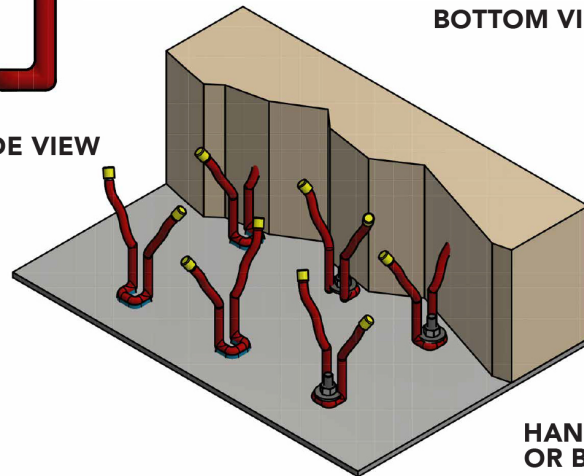
FRONT VIEW



SIDE VIEW



BOTTOM VIEW



HAND WELD OR BOLT ON

DESIGNATION

MANUFACTURED IN MILD STEEL

304 S/STL

316 S/STL

310 S/STL

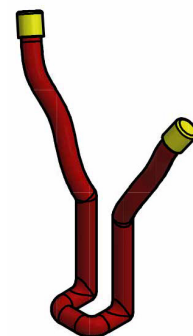
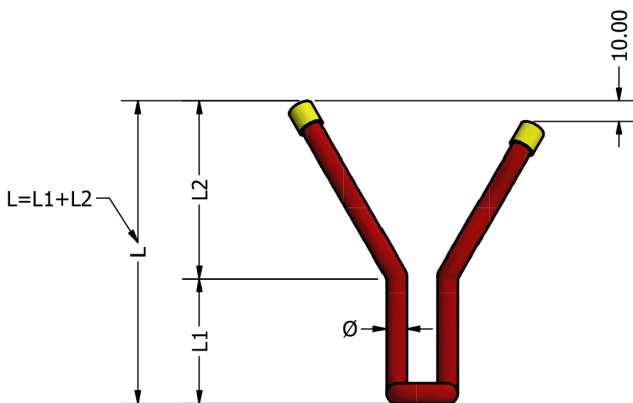
253 MA

L = 25mm - 350mm

BOLT ON WRIGGLE VEE

NOTES

Diameters Available: 5.5mm, 8mm, 10mm, 12mm



DESIGNATION

MANUFACTURED IN MILD STEEL

304 S/STL

316 S/STL

310 S/STL

253 MA

L = 25mm - 350mm

CERAMIC FERRULES



METRIC HEX NUTS STYLES 2 →



METRIC PLAIN WASHERS →



MB STUD →

FLUX BALL →

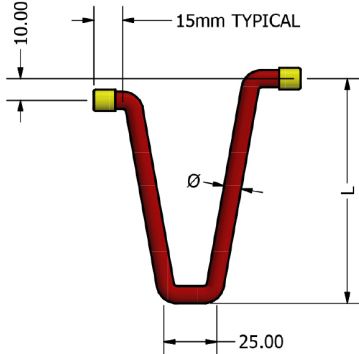
BULL HORN

B.H.H.W

BULL HORN HAND WELD

NOTES

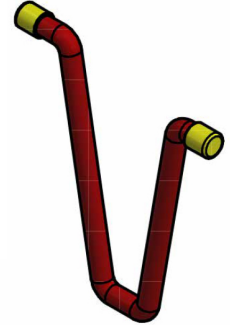
Diameters Available: 5.5mm, 8mm, 10mm and 12mm



FRONT VIEW



SIDE VIEW



3D VIEW

DESIGNATION

MANUFACTURED IN

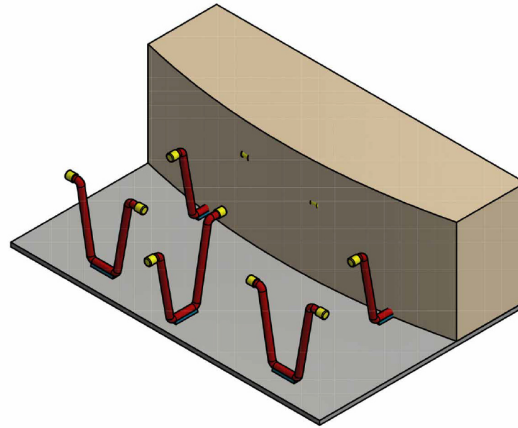
304 S/STL

316 S/STL

310 S/STL

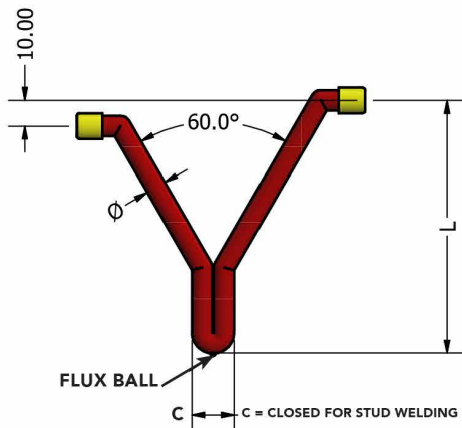
253 MA

L = 25mm - 350mm



B.H.S.W

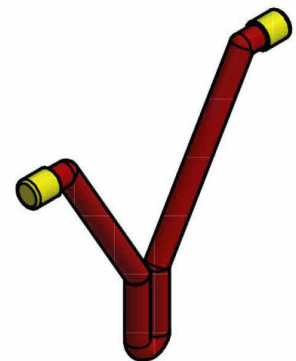
BULL HORN STUD WELD



FRONT VIEW



SIDE VIEW



3D VIEW

DESIGNATION

MANUFACTURED IN MILD STEEL

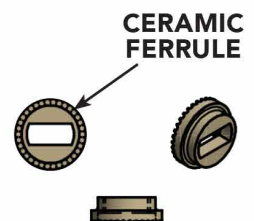
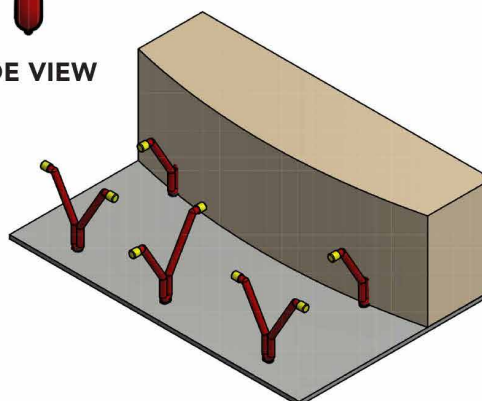
304 S/STL

316 S/STL

310 S/STL

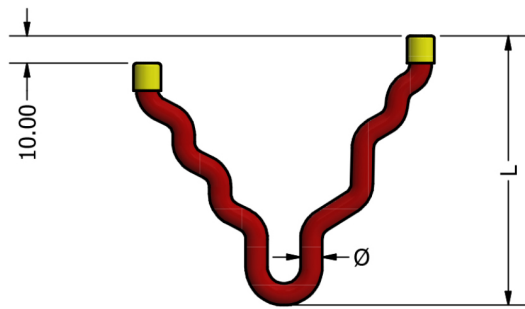
253 MA

L = 25mm - 350mm



NOTES

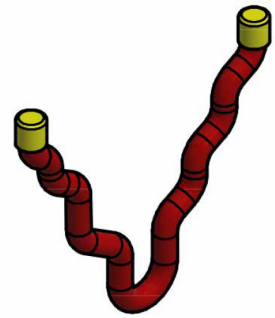
Diameters Available: 5.5mm, 8mm and 10mm



FRONT VIEW



SIDE VIEW



3D VIEW

DESIGNATION

MANUFACTURED IN MILD STEEL

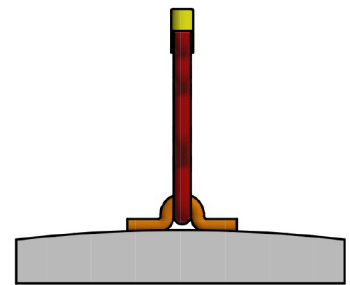
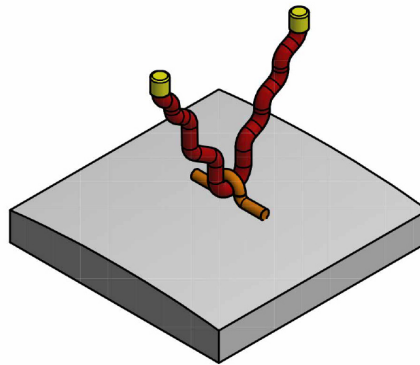
304 S/STL

316 S/STL

310 S/STL

253 MA

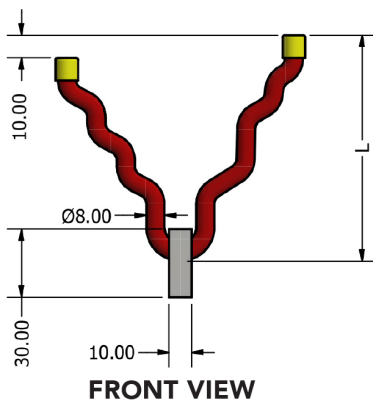
L = 25mm - 350mm



SADDLE MOUNT

NOTES

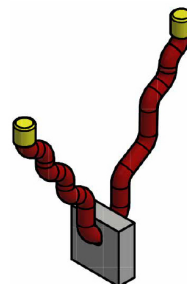
Diameters Available: 5.5mm, 8mm and 10mm



FRONT VIEW



BLACK MOUNT SIDE VIEW



3D VIEW



STUDWELD MOUNT

DESIGNATION

MANUFACTURED IN MILD STEEL

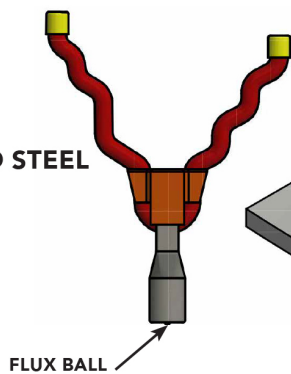
304 S/STL

316 S/STL

310 S/STL

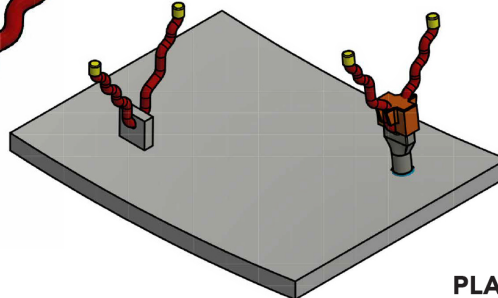
253 MA

L = 25mm - 350mm



FLUX BALL

CERAMIC FERRULES



PLASTIC LOCKING CAP

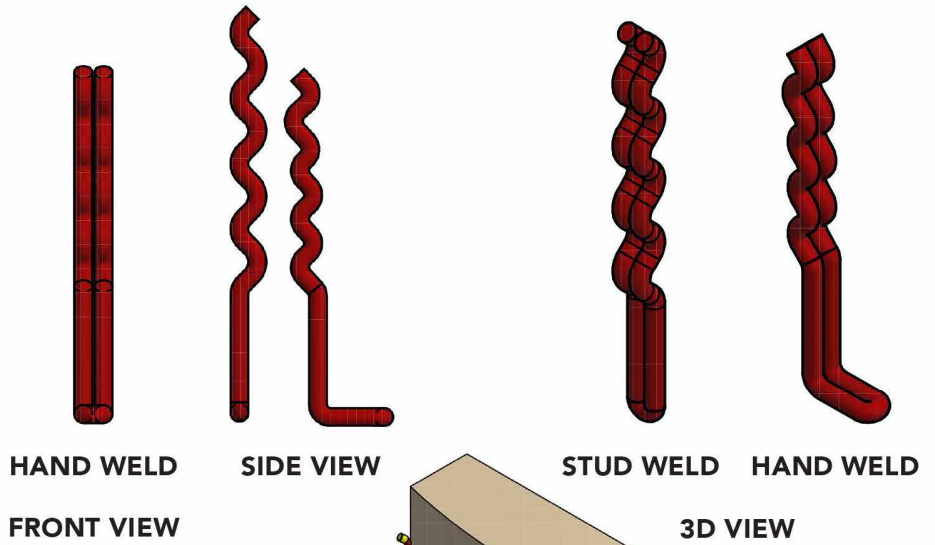
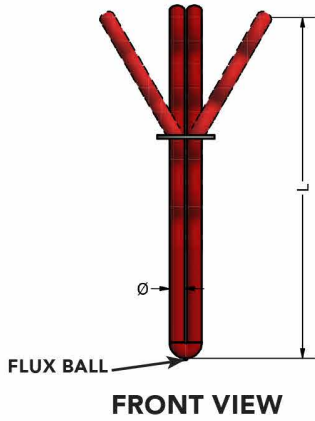
SCISSOR CLIP

V.X.C

CORRUGATED ANCHOR SCISSOR CLIP

NOTES

Diameters Available: 5.5mm, 8mm

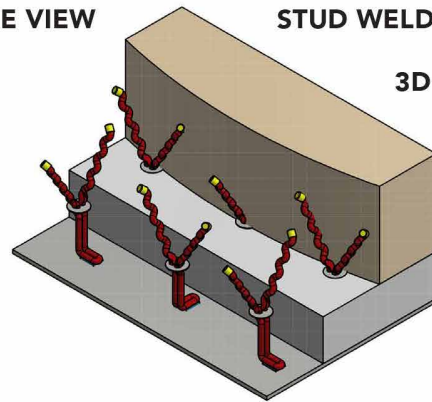
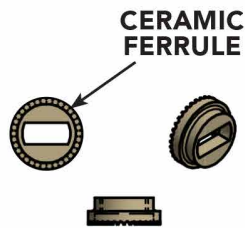


DESIGNATION

MANUFACTURED IN

- 304 S/STL
- 316 S/STL
- 310 S/STL
- 253 MA

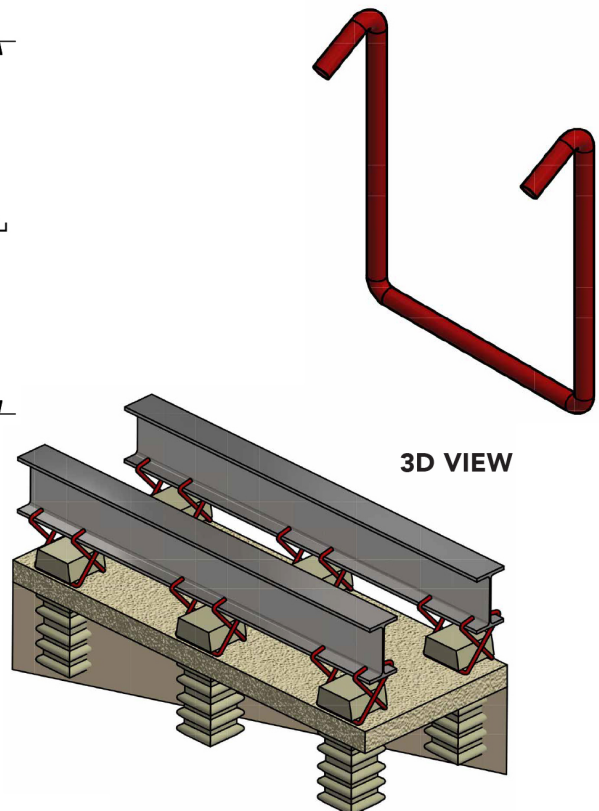
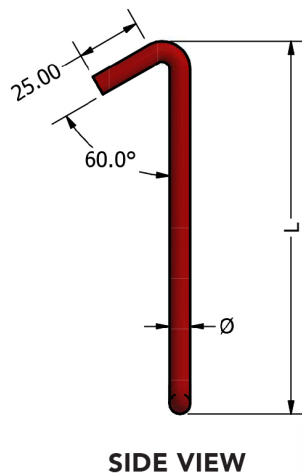
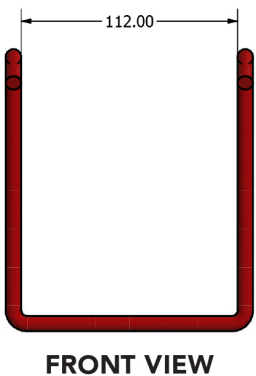
L = 25mm - 350mm



CERAMIC BRICK HOLDER SCISSOR CLIP

NOTES

Diameters Available: 8mm and 10mm



DESIGNATION

MANUFACTURED IN MILD STEEL

- 304 S/STL
- 316 S/STL
- 310 S/STL
- 253 MA

L = 25mm - 350mm

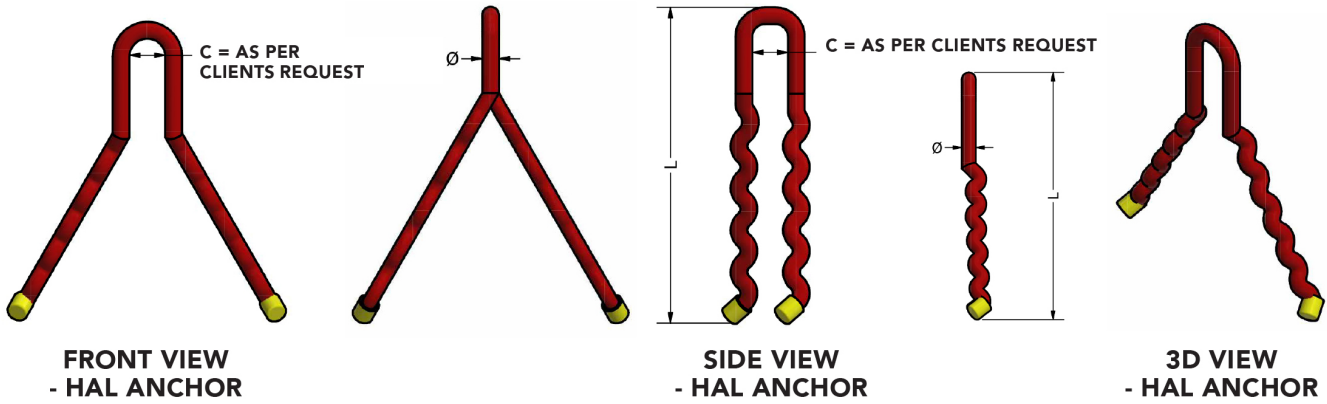
ROOF ANCHOR

V.X.S.B

HAL-HAR SUSPENSION ANCHOR

NOTES

Diameters Available: 5.5mm, 8mm, 10mm and 12mm

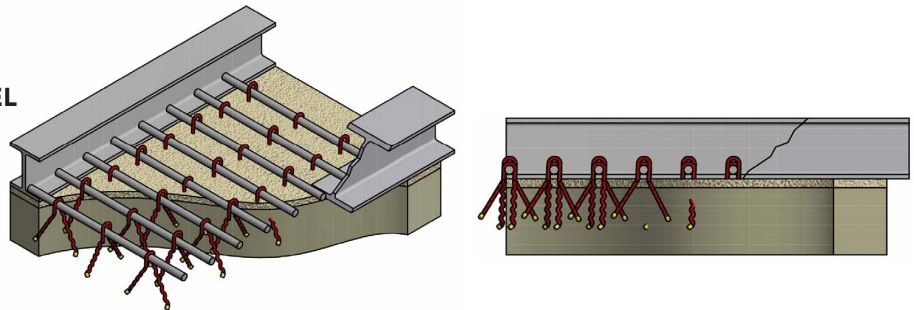


DESIGNATION

MANUFACTURED IN MILD STEEL

- 304 S/STL
- 316 S/STL
- 310 S/STL
- 253 MA

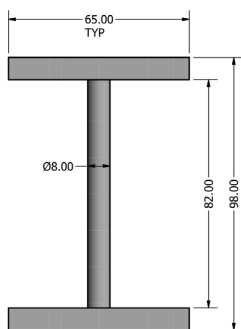
L = 25mm - 350mm



HOLD DOWN BOX ANCHOR

NOTES

Diameters Available: 5.5mm, 8mm and 10mm



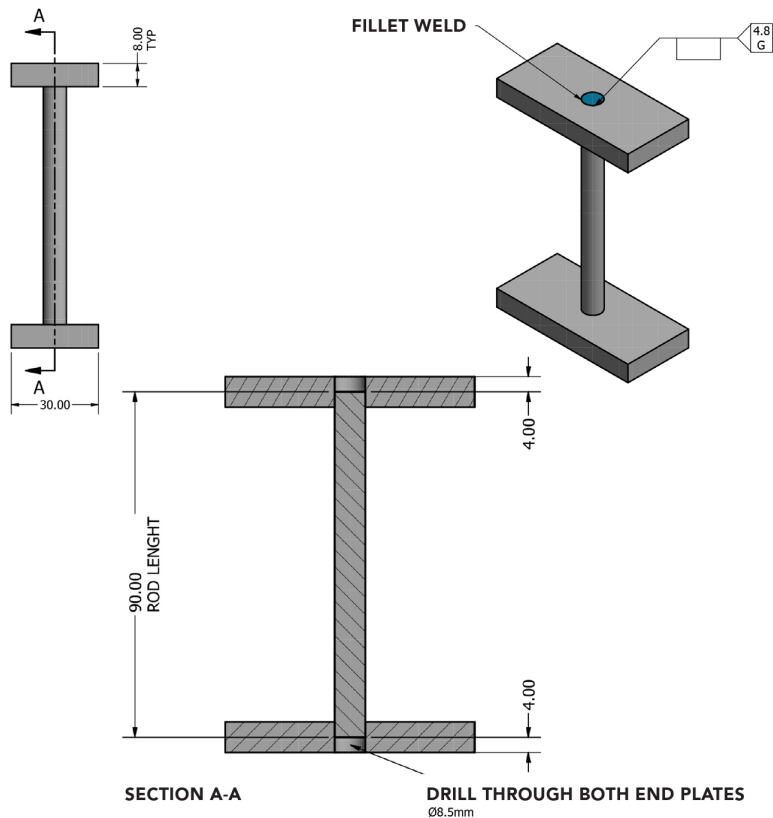
FRONT VIEW

DESIGNATION

MANUFACTURED IN MILD STEEL

- 304 S/STL
- 316 S/STL
- 310 S/STL

L = 25mm - 350mm



SECTION A-A

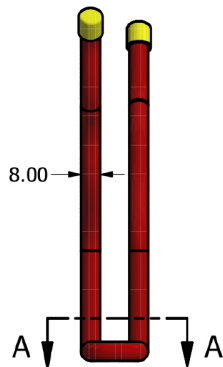
DRILL THROUGH BOTH END PLATES
Ø8.5mm

SPECIAL

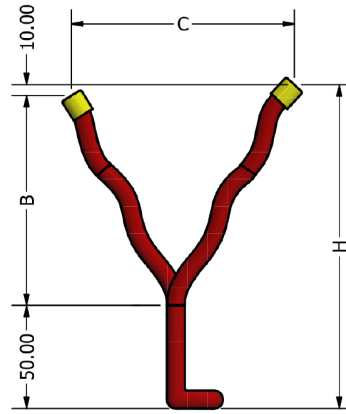
ANCHOR CO1 & CO3

NOTES

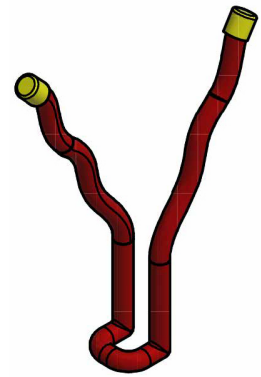
Diameters Available: 5.5mm, 8mm, 10mm and 12mm



FRONT VIEW



SIDE VIEW



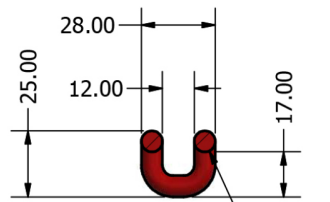
3D VIEW

DESIGNATION

MANUFACTURED IN

- 304 S/STL
- 316 S/STL
- 310 S/STL
- 253 MA

L = 25mm - 350mm



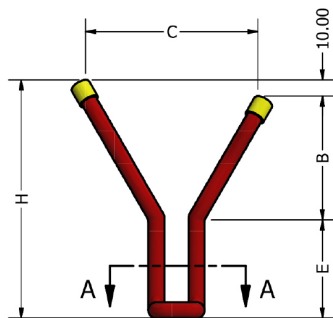
SECTION A-A

SPECIAL

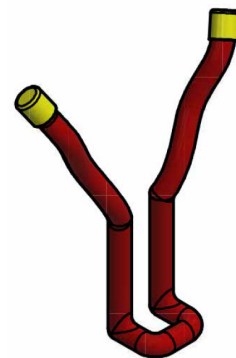
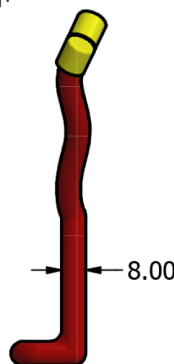
ANCHOR CO2 & CO4

NOTES

Diameters Available: 5mm, 8mm, 10mm and 12mm



FRONT VIEW

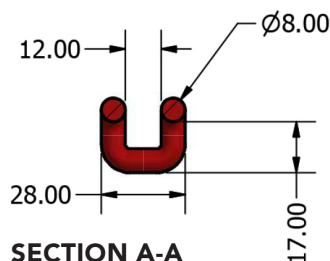


DESIGNATION

MANUFACTURED IN MILD STEEL

- 304 S/STL
- 316 S/STL
- 310 S/STL
- 253 MA

L = 25mm - 350mm



SECTION A-A

TABLE

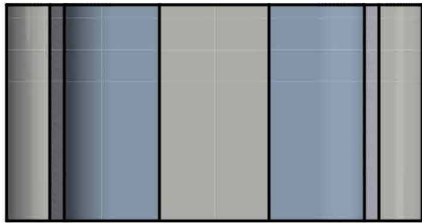
1	2	3	4	5
ITEM	E	B	C	H
CO2	50	65	86	115
CO4	75	100	120	150

"C" CLIP

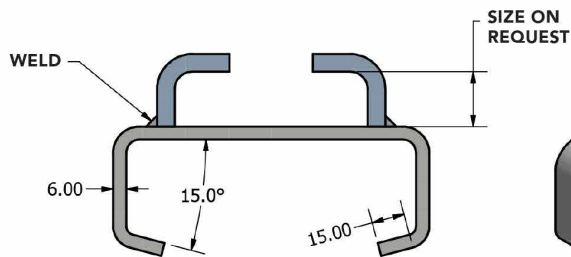
STANDARD "C" CLIP

NOTES

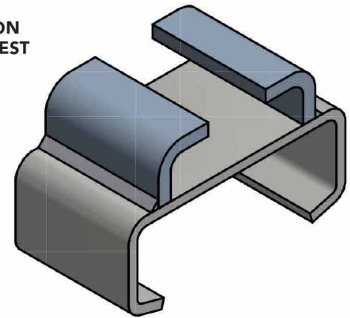
Diameters Available: 5.5mm, 8mm, 10mm and 12mm



PLAN VIEW



SIDE VIEW



3D VIEW

DESIGNATION

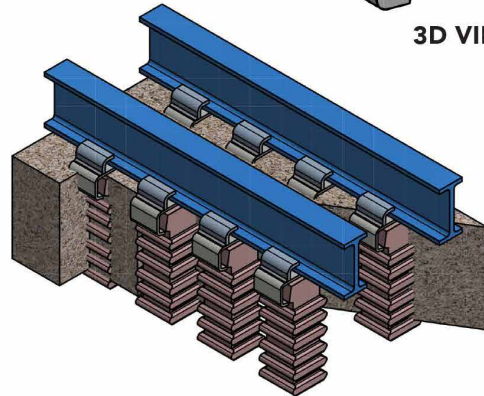
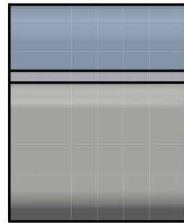
MANUFACTURED IN MILD STEEL

304 S/STL

316 S/STL

310 S/STL

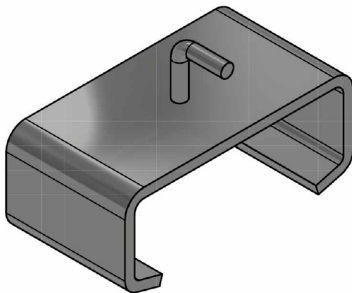
L = 25mm - 350mm



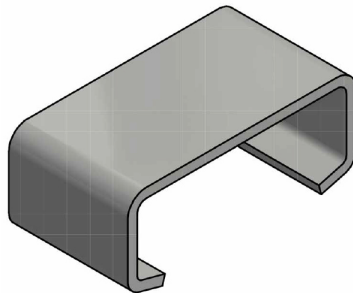
REFRACTORY ANCHORS "C" CLIP TYPES

NOTES

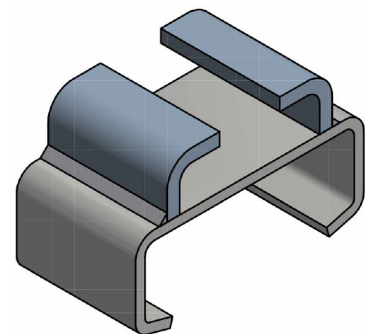
Diameters Available: 5.5mm, 8mm and 10mm



ITEM 1
ROD MOUNTED "C" CLIP



ITEM 2
PLAIN "C" CLIP



ITEM 3
"I" BEAM MOUNTED "C" CLIP

DESIGNATION

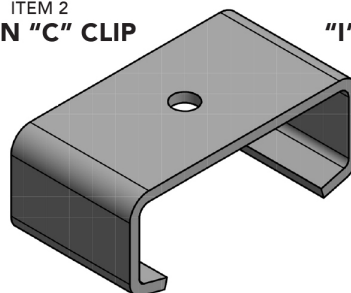
MANUFACTURED IN MILD STEEL

304 S/STL

316 S/STL

310 S/STL

L = 25mm - 350mm



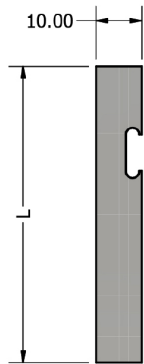
ITEM 4
HOLE TYPE "C" CLIP

R6P SUSPENSION

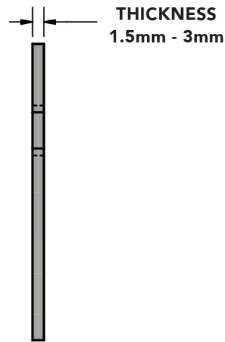
R6P ANCHOR USED TO SUPPORT MESH

NOTES

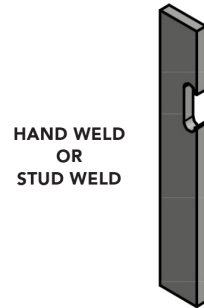
Diameters Available: 5.5mm, 8mm, 10mm and 12mm



FRONT VIEW



SIDE VIEW



HAND WELD
OR
STUD WELD

3D VIEW

DESIGNATION

MANUFACTURED IN

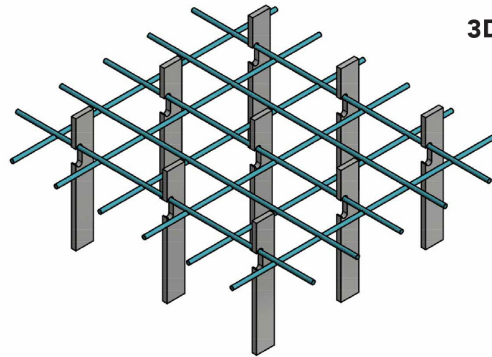
304 S/STL

316 S/STL

310 S/STL

253 MA

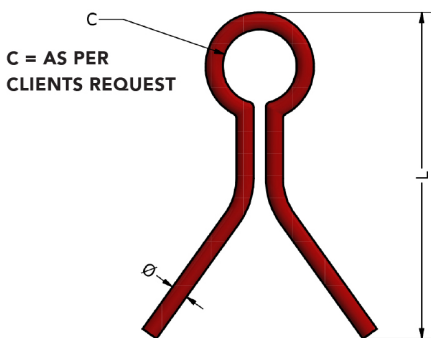
L = 25mm - 350mm



S.A. SUSPENSION ANCHOR

NOTES

Diameters Available: 5mm, 8mm, 10mm and 12mm

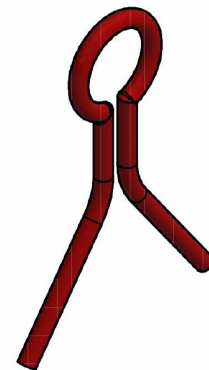


C = AS PER
CLIENTS REQUEST

FRONT VIEW



SIDE VIEW



3D VIEW

DESIGNATION

MANUFACTURED IN MILD STEEL

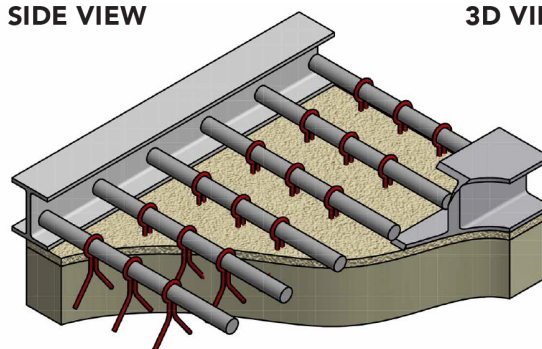
304 S/STL

316 S/STL

310 S/STL

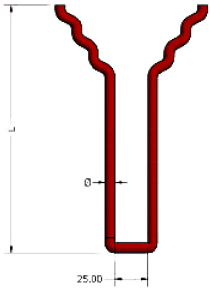
253 MA

L = 25mm - 350mm



NOTES

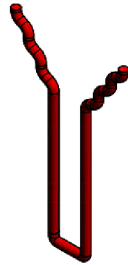
Diameters Available: 5.5mm, 8mm, 10mm and 12mm



FRONT VIEW



SIDE VIEW



3D VIEW

DESIGNATION

MANUFACTURED IN MILD STEEL

304 S/STL

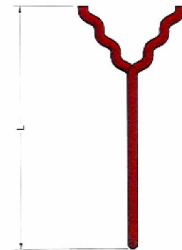
316 S/STL

310 S/STL

L = 25mm - 350mm



FRONT VIEW



SIDE VIEW

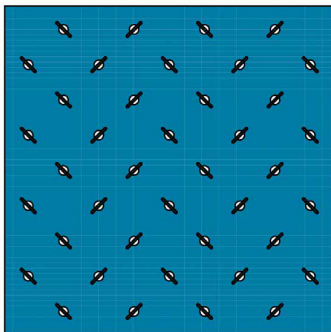


3D VIEW

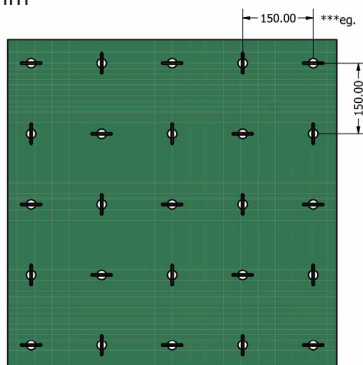
TYPICAL ANCHOR PATTERNS

NOTES

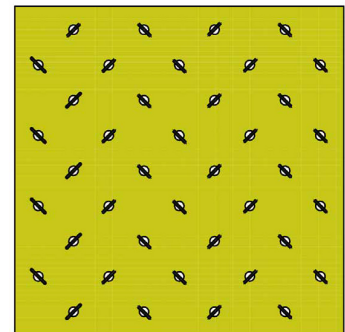
Diameters Available: 5.5mm, 8mm and 10mm



STAGGERED



SQUARE



DIAMOND

DESIGNATION

MANUFACTURED IN MILD STEEL

304 S/STL

316 S/STL

310 S/STL

253 MA

L = 25mm - 350mm

***eg.

'CENTRE TO CENTRE' ANCHOR													
75	100	120	150	175	200	225	250	275	300	325	350	375	400
ANCHORS REQUIRED FOR 'SQAURE METER PATTERN'													
170	100	65	40	30	24	20	15	12	10	9	8	6	5



OUR OFFICES

CONTACT US to learn how DGC can help transform your operations and deliver sustainable competitive advantage.

E contactus@dgc-africa.com

DGC INTERNATIONAL

E International@dgc-africa.com

3rd Floor, Ebene Skies
Rue de L'institut
Ebene, Republic of Mauritius

DGC ZAMBIA

T +260 761 83 2470

Plot 1035-1037, Shop 1,
Blantyre Road, Light Industrial Area,
Kitwe, Zambia

DGC MADAGASCAR

T +261 32 112 2122

Lot Ivx 30 Bis Ankazomanga rue
Dr Raseta Antananarivo, 101,
Madagascar

DGC SOUTH AFRICA

T +27 16 421 3720

10 Smuts Avenue,
Vereeniging,
1930, South Africa

DGC DEMOCRATIC REPUBLIC OF CONGO

T +243 8996 49 493

KOLWEZI OFFICE
118 Avenue Kalima, Quartier Mutoshi,
Commune Manika / Kolwezi

LUBUMBASHI OFFICE

199 Avenue Mubanzo Quartier;
Golf Malela. Commune Lubumbashi,
Province du Haut-Katanga, République
démocratique du Congo

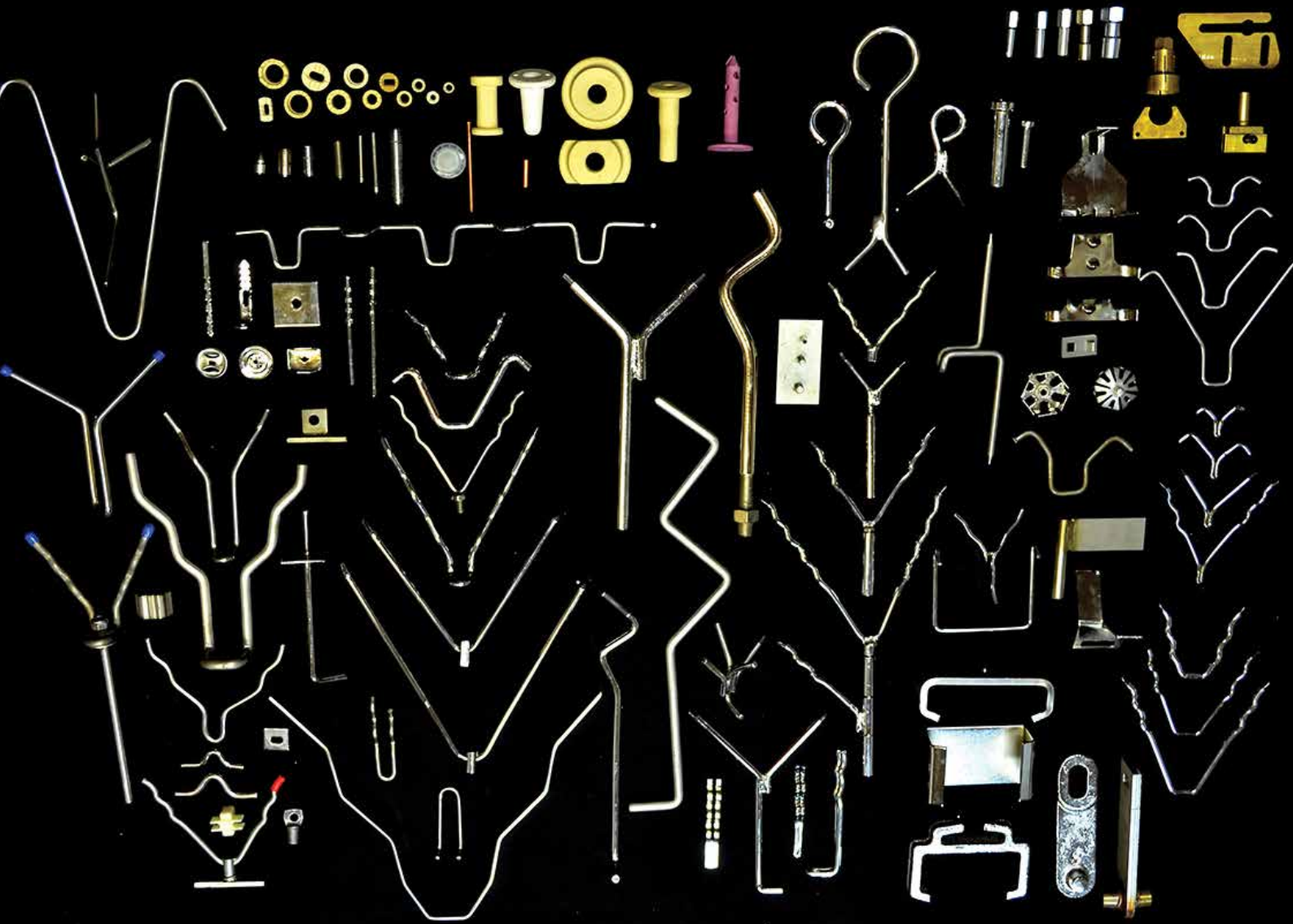
DGC ZIMBABWE

T +263 772 514 480

311 Esap Way,
Willowvale
Harare, Zimbabwe

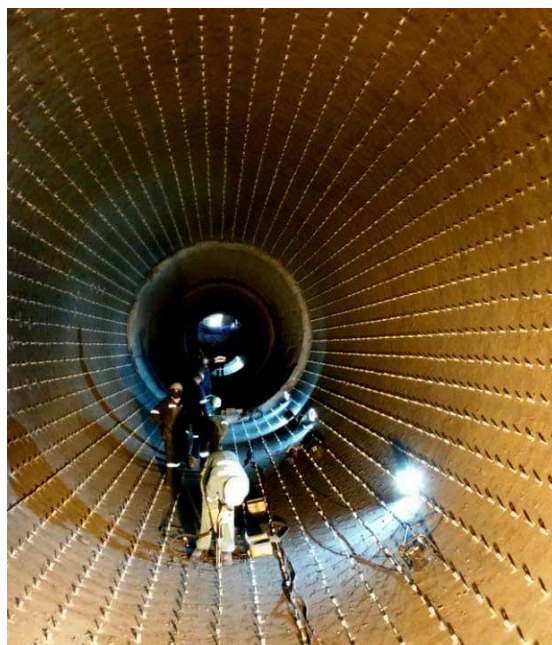
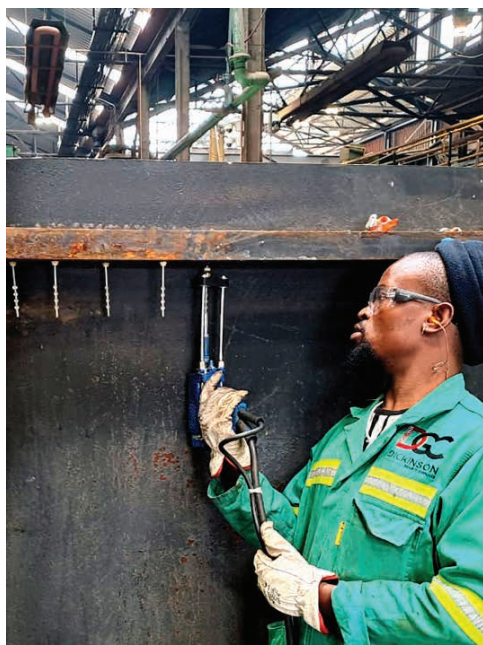


OVER A CENTURY OF SERVICE. A FUTURE BUILT ON ENGINEERED RESILIENCE.



**CONTACT US TODAY
FOR ALL YOUR REFRACTORY ANCHOR NEEDS**

T +27 16 421 3720 **E** contactus@dgc-africa.com





www.dgc-africa.com