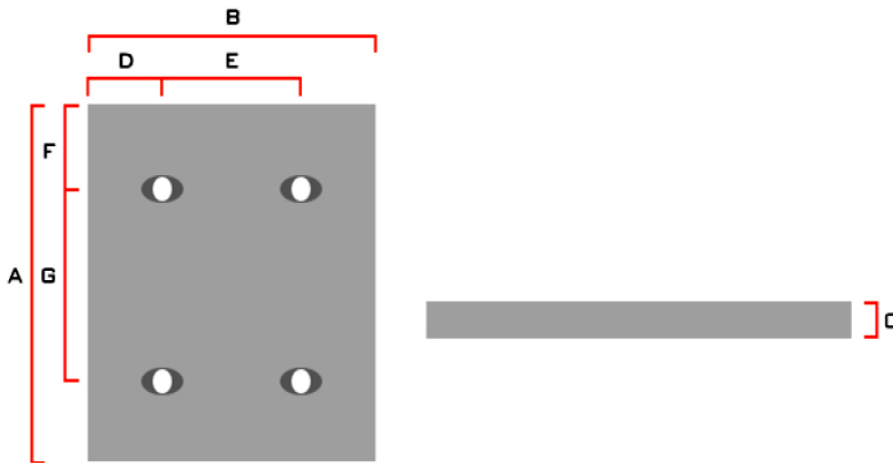


ENDURACAST<sup>®</sup> comes in a range of standard sizes and shapes for materials handling applications and are typically available in either NiCr4-600 or CrMo 15 3 white irons.

GRADE	AS2027-2002 DESIGNATION
LOW ALLOYED, UNALLOYED NICKEL-CHROMIUM	NiCr4-600
HIGH ALLOYED	CrMo 15 3
HIGH CHROMIUM	Cr 27 HC
AUSTENITIC MANGANESE STEEL	AS2074 H1A

Commonly available Liners, Skirt Liners and Billets are listed in the following pages.

## WEAR LINERS - STANDARDS



PART NUMBER	MATERIAL GRADES		DIMENSIONS (mm)							# OF HOLES	MASS (kg)
	NiCr4-600	CrMo 15/3	A	B	C	D	E	F	G		
L1	X	X	444	444	32	70	304	70	304	4	49.8
L2	X	X	444	216	32	70	-	70	304	2	24.2
L3	X	X	444	292	32	70	152	70	304	4	32.7



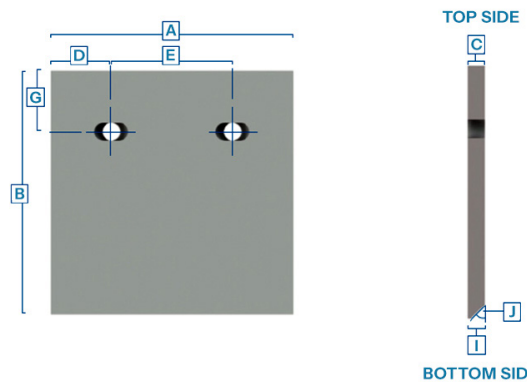
**ENDURACLAD**  
 INTERNATIONAL

# ENDURACAST<sup>®</sup> TECHNICAL DATA SHEET

## WEAR LINERS - STANDARDS CONTINUED....

PART NUMBER	MATERIAL GRADES		DIMENSIONS (mm)							# OF HOLES	MASS (kg)
	NiCr4-600	CrMo 15/3	A	B	C	D	E	F	G		
L4	X	X	444	140	32	70	-	70	304	2	15.7
L6	X	X	292	140	32	70	-	70	152	2	10.3
L18	X	X	292	292	32	70	152	70	152	4	21.5
L3A	X	X	292	444	32	70	304	70	152	4	24.6
L18A	X	X	292	292	32	70	152	70	152	3	16.8
L2W	X	X	452	224	32	74	-	74	304	2	25.6
L3W	X	X	452	300	32	74	304	-	-	4	34.3
L4W	X	X	452	148	32	74	-	74	304	2	16.9
L6W	X	X	300	148	32	74	-	74	152	2	11.2
L18W	X	X	300	300	32	74	152	74	152	4	22.7

## SKIRTLINERS - STANDARDS



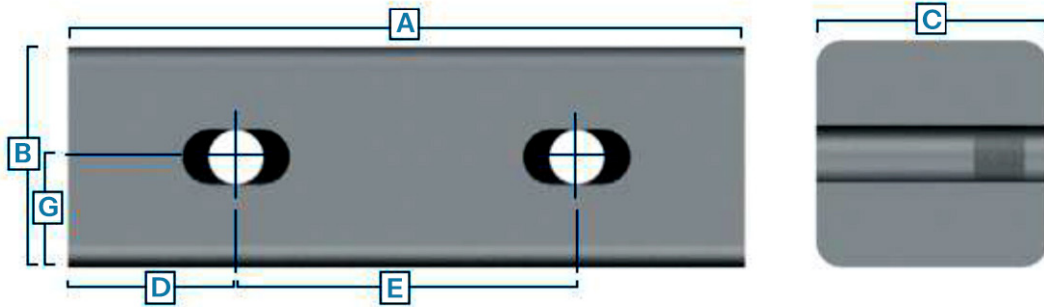
PART NUMBER	MATERIAL GRADES		DIMENSIONS (mm)								MASS (kg)
	Ni-Hard 4	CrMo 15/3	A	B	C	D	E	G	I	J°	
SL1	X	X	444	292	32	70	304	70	16	45 Y	24.6
SL2W*	X	X	452	296	32	74	304	74	16	45 Y	33.3
SL3W	X	X	300	224	32	74	304	74	16	45 Y	16.7
SL18W	X	X	300	300	32	74	152	60	16	45 Y	22.4

Note: \* - Bevel on wear face.



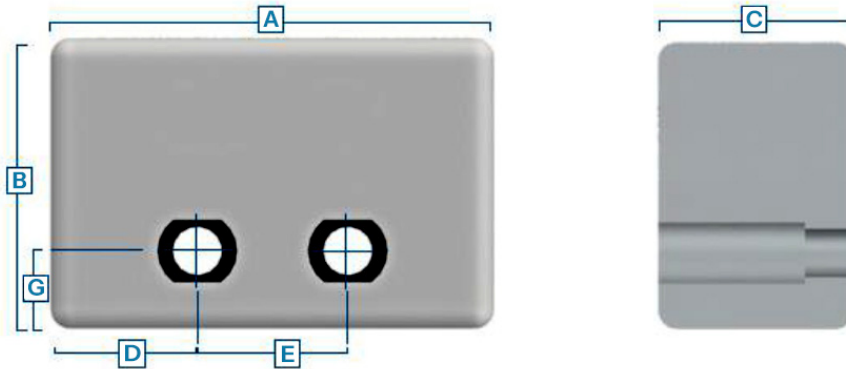
# ENDURACAST<sup>®</sup> TECHNICAL DATA SHEET

## WEAR BILLETS – STANDARD – NI-HARD 4



PART NUMBER	DIMENSIONS (mm)						MASS (kg)
	A	B	C	D	E	G	
WB1	302	100	100	75	152	50	22
WB2	454	100	100	75	304	50	34

## WEAR BILLETS – STANDARD – NI-HARD 4



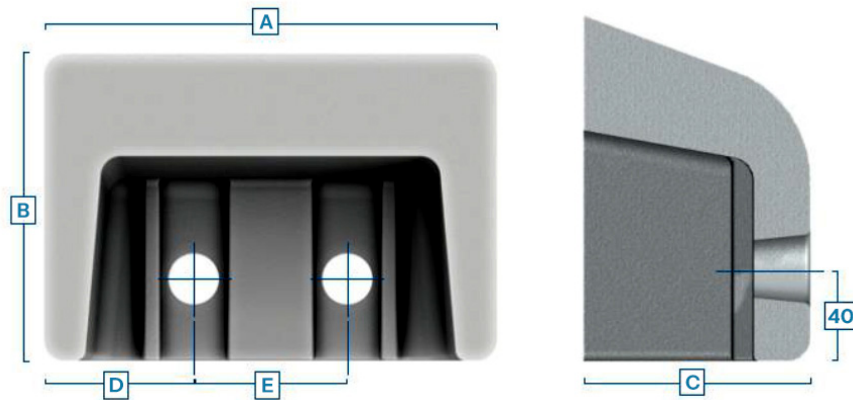
Fastener: M20 Hex Head Bolt

PART NUMBER	DIMENSIONS (mm)						MASS (kg)
	A	B	C	D	E	G	
B224	224	150	100	74	76	40	25
B300	300	150	100	74	152	40	33



# DGC ENDURACAST<sup>®</sup> TECHNICAL DATA SHEET

## WEAR BILLETS – STANDARD – NI-HARD 4 CONTINUED...



Fastener: M20 Hex Head Bolt

PART NUMBER	DIMENSIONS (mm)					MASS (kg)
	A	B	C	D	E	
HB224	224	150	100	74	76	14
HB300	300	150	100	74	152	18

**MADE TO ORDER (MTO)** – All our **ENDURACAST** products can be modified, pre-engineered to match any design, or application. Contact **DGC AFRICA** for parts to meet your specific requirements.



[www.dgc-africa.com](http://www.dgc-africa.com) | Telephone +27 (16) 421 3720 | Email [contactus@dgc-africa.com](mailto:contactus@dgc-africa.com)

### DGC INTERNATIONAL

E [International@dgc-africa.com](mailto:International@dgc-africa.com)

2nd Floor, The AXIS,  
26 Bank Street,  
Cybercity,  
Ebene, 72201,  
Mauritius

### DGC SOUTH AFRICA

T +27 (0) 16 421 3720  
E [sales@dgrpint.com](mailto:sales@dgrpint.com)

10 Smuts Avenue,  
Vereeniging, 1930,  
South Africa

### DGC ZAMBIA

T +260 761 83 2470  
T +27 (0) 82 319 8005  
E [Zambia@dgc-africa.com](mailto:Zambia@dgc-africa.com)

Plot 2394,  
Freedom Way,  
Mufulira

### DGC ZIMBABWE

T +263 772 514 480  
E [Zimbabwe@dgc-africa.com](mailto:Zimbabwe@dgc-africa.com)

311 Esap Way,  
Willowvale,  
Harare,  
Zimbabwe

### DGC DEMOCRATIC REPUBLIC OF CONGO

T +243 8996 49 493  
T +27 (0) 82 319 8005  
E [DRC@dgc-africa.com](mailto:DRC@dgc-africa.com)

**Kolwesi Office:**  
118 Avenue Kalima,  
Quartier Mutoshi,  
Commune Manika / Kolwezi

**Lubumbashi Office:**  
199 Avenue Mubanzo Quartier,  
Golf Malela,  
Commune Lubumbashi,  
Province du Haut-Katanga,  
République démocratique du Congo

### DGC CHINA

E [China@dgc-africa.com](mailto:China@dgc-africa.com)

### DGC MADAGASCAR

T +261 32 112 2122  
E [Madagascar@dgc-africa.com](mailto:Madagascar@dgc-africa.com)

Lot Ivx 30,  
Bis Ankazomanga rue,  
Dr Raseta Antananarivo,  
101, Madagascar

### DGC LATAM

T +55 31 3712 5329  
T +55 31 9961 82402  
E [Brazil@dgc-africa.com](mailto:Brazil@dgc-africa.com)

1200, Carlos Alves dos Santos St.  
35.702-000,  
Industrial District,  
Matozinhos Minas Gerais,  
Brazil

**OUR OFFICES**