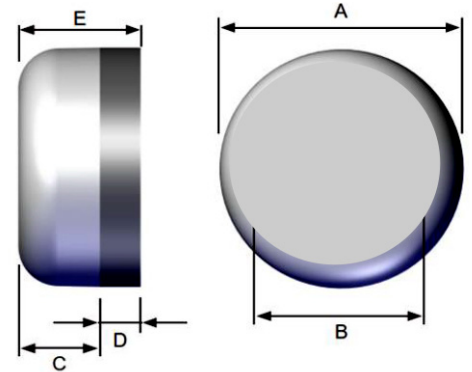


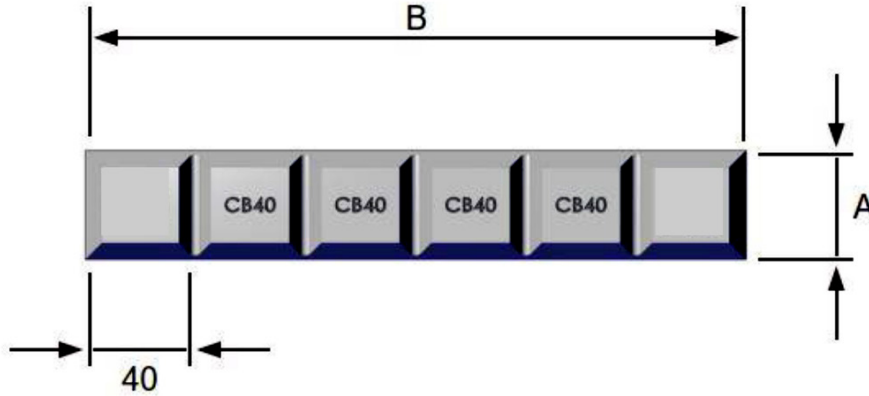
ENDURABLOCK[®] are the range of wear parts that comprise a casting in AS2027-2002 CrMo 15 3 white iron in various shapes vacuum brazed onto a mild steel backing plate.

WEAR BUTTONS - STANDARDS

PART NUMBER	DIMENSIONS (mm)					MASS (kg)
	A	B	C	D	E	
WBN60	60	40	20	10	30	0.7
WBN75	75	55	20	10	30	1
WBN90	90	70	20	10	30	1.5
WBN115	115	95	20	12	32	2.5
WBN150	150	130	20	16	41	5.7



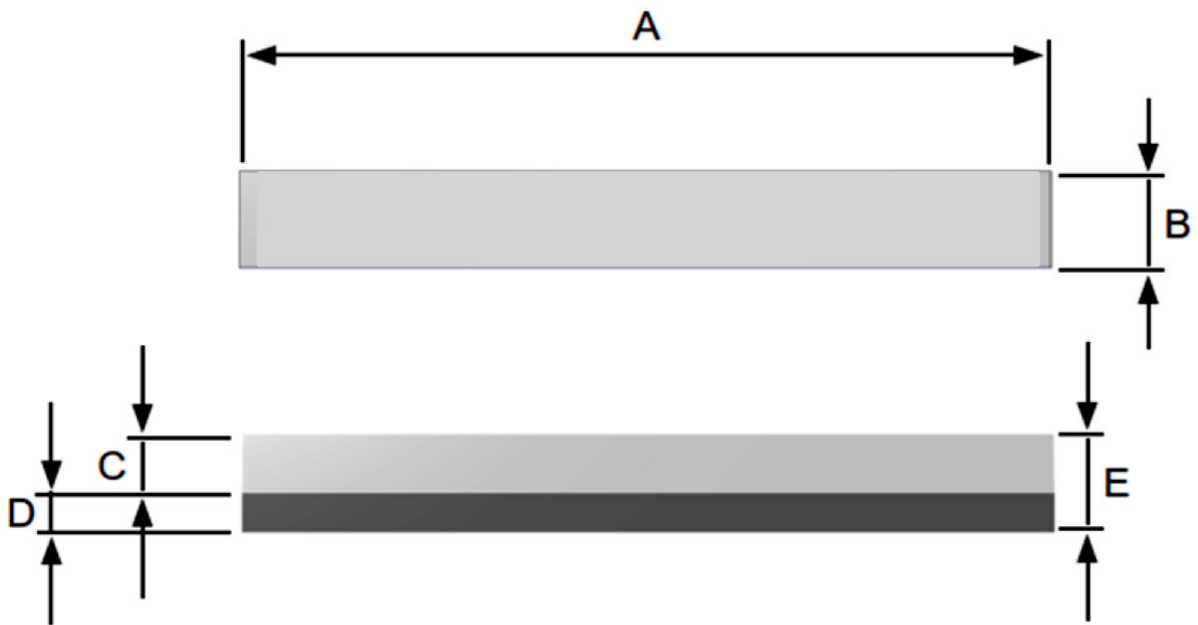
CHOCKY BARS- STANDARDS



PART NUMBER	DIMENSIONS (mm)					MASS (kg)
	A	B	C	D	E	
CB25N	25	240	23	15	8	0.7
CB40N	40	240	23	15	8	1
CB50N	50	240	23	15	8	1.5
CB65N	65	240	23	15	8	2.5
CB90N	90	240	29	17	12	3.5
CB100N	100	240	29	17	12	5.1
CB130N*	130	240	29	17	12	6.4

ENDURABLOCK[®] TECHNICAL DATA SHEET

WEAR BARS - STANDARDS



PART NUMBER	DIMENSIONS (mm)					MASS (kg)
	A	B	C	D	E	
WB115	115	50	38	12	50	2.3
WB127	127	50	38	12	50	2.4
WB150	150	50	40	10	50	2.9
WB190	190	50	40	10	50	3.7
WB210	210	50	38	12	50	4.1
WB230	230	50	38	12	50	4.5
WB294	294	50	40	10	50	5.8
WB300	300	50	40	10	50	5.9
WB432	432	50	38	12	50	8.5
WB206	206	203	38	20	58	8.5
WB241	241	100	38	20	58	11
WB150X75	150	75	50	10	60	5.3

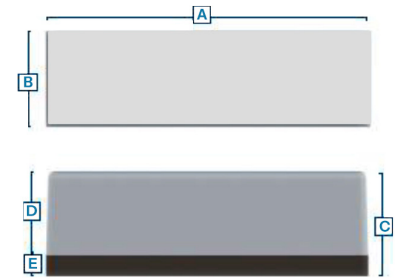


ENDURACLAD
INTERNATIONAL

ENDURABLOCK[®] TECHNICAL DATA SHEET

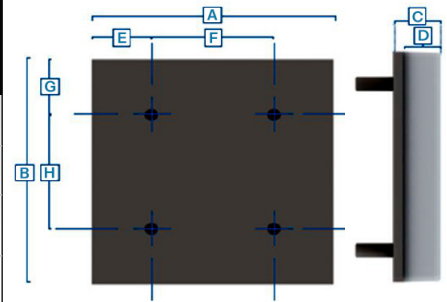
WEAR BLOCKS – STANDARDS

PART NUMBER	DIMENSIONS (mm)					MASS (kg)
	A	B	C	D	E	
WB300/100/100	300	100	100	80	20	23.4
WB300/140/100	300	140	100	80	20	32.8
WB150/100/100	150	100	100	80	20	11.7



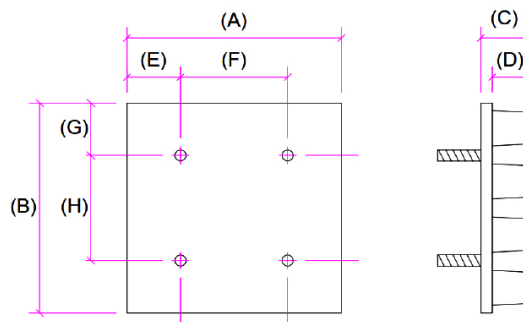
WEAR PLATE – STANDARDS WITH NO STUDS

PART NUMBER	DIMENSIONS (mm)				MASS (kg)
	A	B	C	D	
M300x300x30	300	300	30	20	21.1
LBM148x300x30	148	300	30	20	10.4
LBM452x300x30	452	300	30	20	31.8
LBM452x148x30	452	148	30	20	15.7



ENDURATRAP – STANDARDS

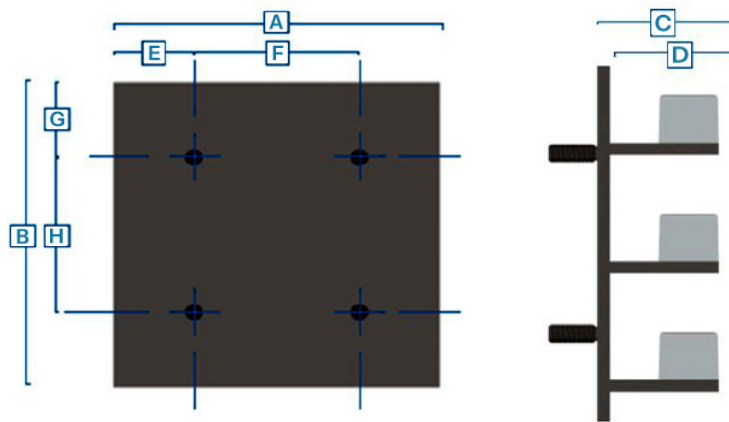
PART NUMBER	DIMENSIONS (mm)								MASS (kg)
	A	B	C	D	E	F	G	H	
ET300x300x50	300	300	50	40	74	152	74	152	26
ET300x150x50-H	300	150	50	40	74	152	74		13
ET300x150x50-V	148	300	50	40	74		74	152	13



DGC ENDURABLOCK[®] TECHNICAL DATA SHEET

MICROLEDGES – STANDARDS

PART NUMBER	DIMENSIONS (mm)								MASS (kg)
	A	B	C	D	E	F	G	H	
EL300x300x90ST4	300	300	100	90	74	52	74	152	27
EL300x150x90ST2	148	300	100	90	74	-	74	152	14
EL150x300x90ST2	300	150	100	90	74	152	74	-	10



MADE TO ORDER (MTO) All our **DGC AFRICA** products can be modified, pre-engineered to match any design, or application. Contact **DGC AFRICA** for parts to meet your specific requirements.



www.dgc-africa.com | Telephone +27 (16) 421 3720 | Email contactus@dgc-africa.com

DGC INTERNATIONAL

E International@dgc-africa.com

2nd Floor, The AXIS,
26 Bank Street,
Cybercity,
Ebene, 72201,
Mauritius

DGC SOUTH AFRICA

T +27 (0) 16 421 3720
E sales@dgrpint.com

10 Smuts Avenue,
Vereeniging, 1930,
South Africa

DGC ZAMBIA

T +260 761 83 2470
T +27 (0) 82 319 8005
E Zambia@dgc-africa.com

Plot 2394,
Freedom Way,
Mufulira

DGC ZIMBABWE

T +263 772 514 480
E Zimbabwe@dgc-africa.com

311 Esap Way,
Willowvale,
Harare,
Zimbabwe

DGC DEMOCRATIC REPUBLIC OF CONGO

T +243 8996 49 493
T +27 (0) 82 319 8005
E DRC@dgc-africa.com

Kolwesi Office:
118 Avenue Kalima,
Quartier Mutoshi,
Commune Manika / Kolwezi

Lubumbashi Office:
199 Avenue Mubanzo Quartier,
Golf Malela,
Commune Lubumbashi,
Province du Haut-Katanga,
République démocratique du Congo

DGC CHINA

E China@dgc-africa.com

DGC MADAGASCAR

T +261 32 112 2122
E Madagascar@dgc-africa.com

Lot Ivx 30,
Bis Ankazomanga rue,
Dr Raseta Antananarivo,
101, Madagascar

DGC LATAM

T +55 31 3712 5329
T +55 31 9961 82402
E Brazil@dgc-africa.com

1200, Carlos Alves dos Santos St.
35.702-000,
Industrial District,
Matozinhos Minas Gerais,
Brazil

OUR OFFICES